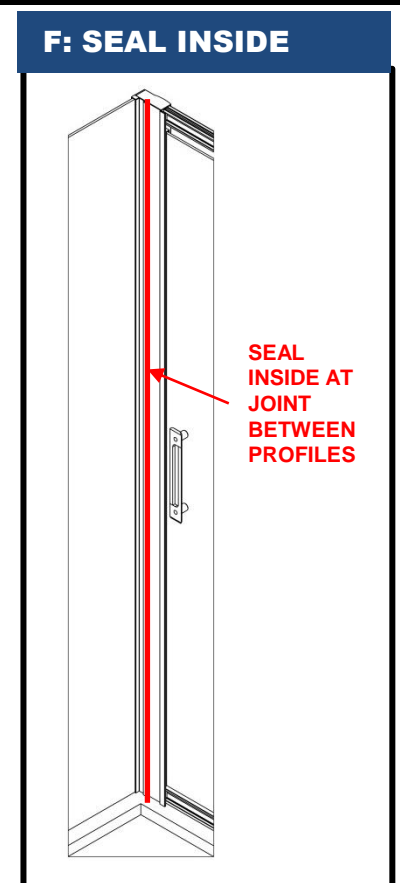
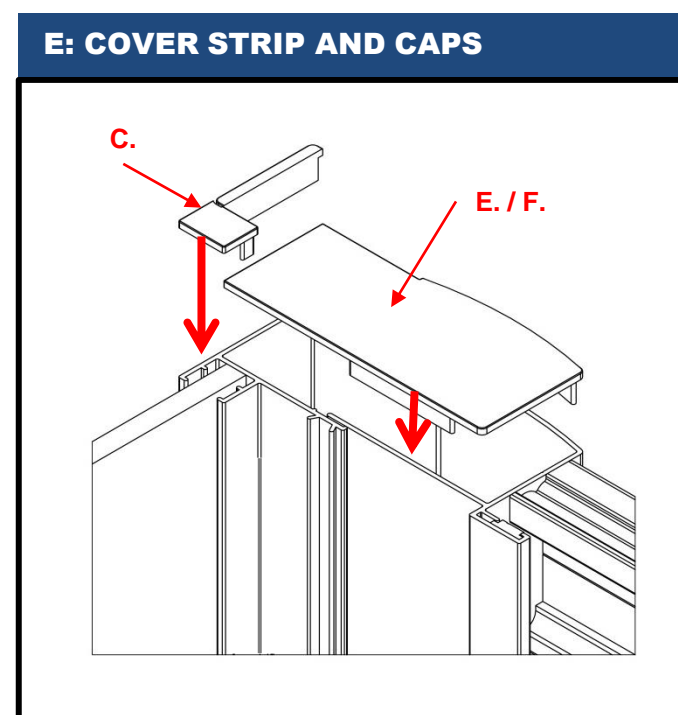
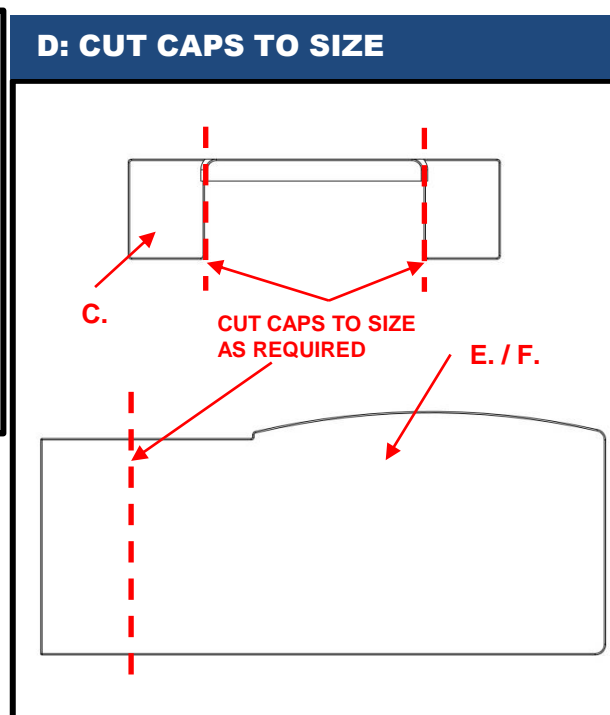
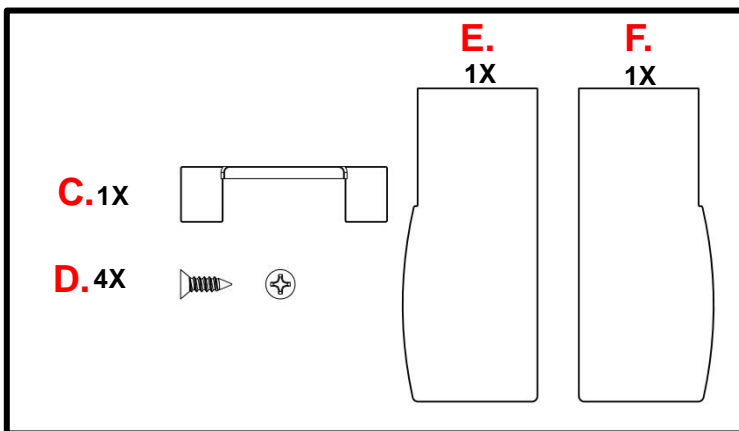
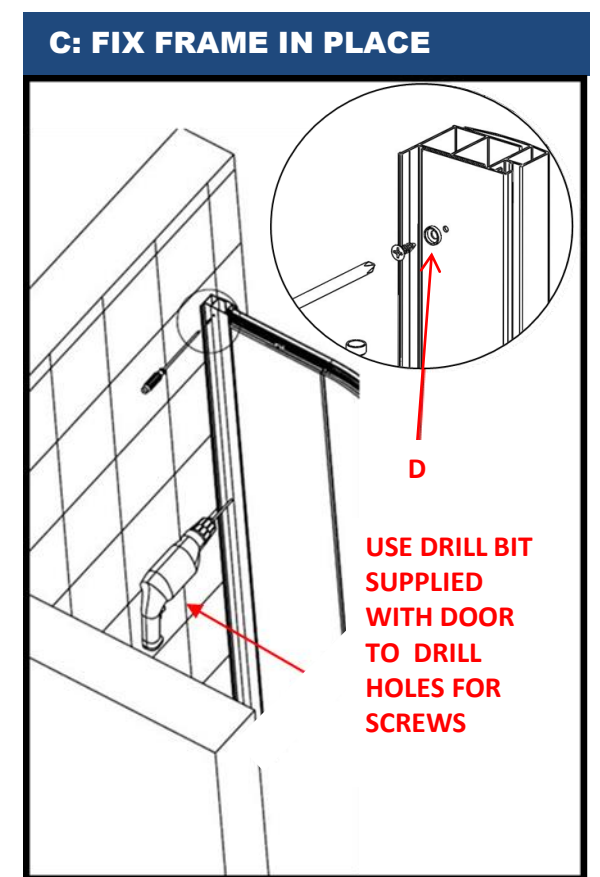
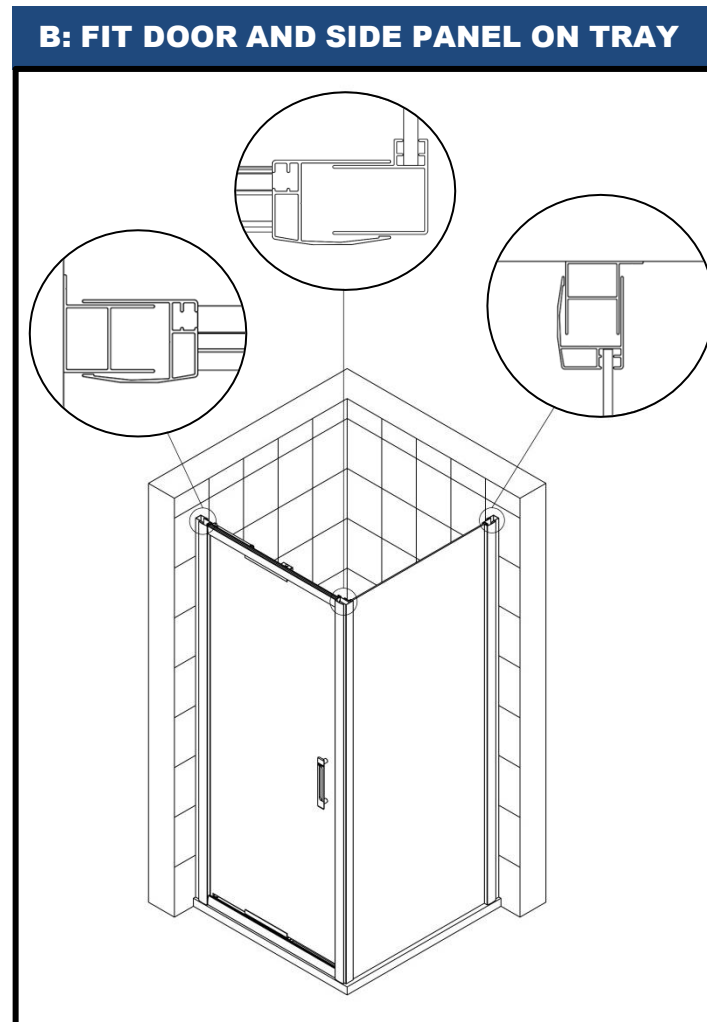
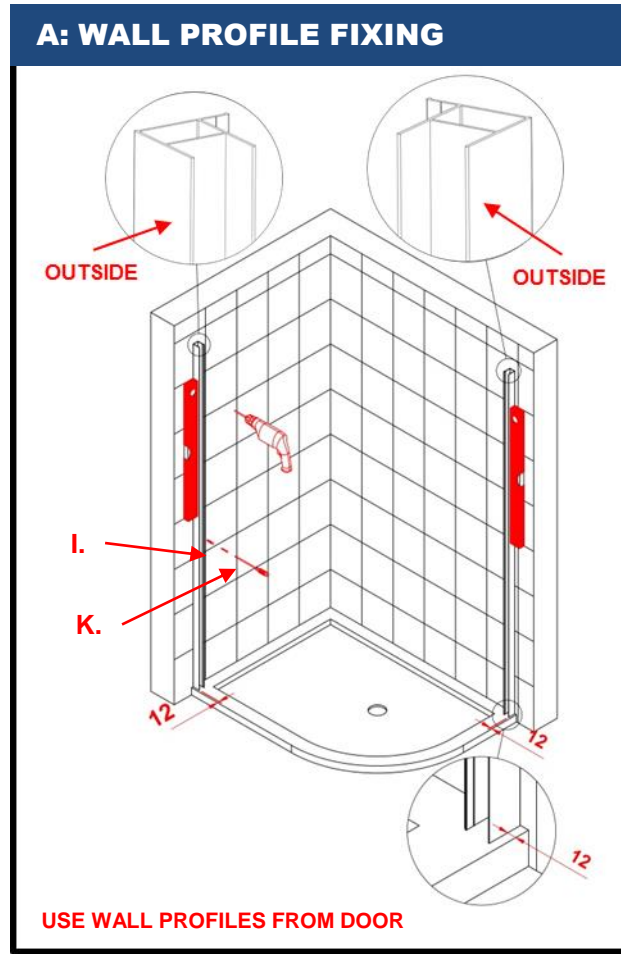
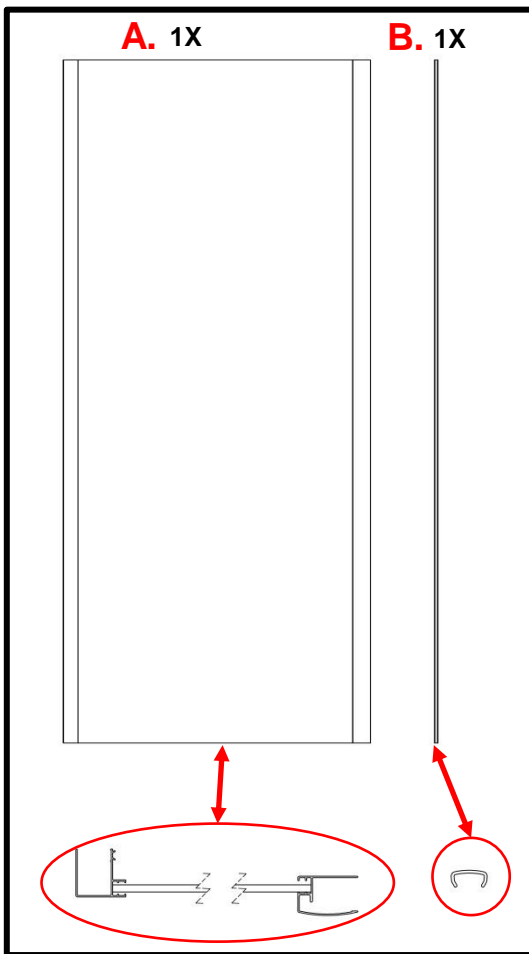


EIGHT SIDE PANEL FITTING INSTRUCTIONS (INSTRUCTION NO. 2898)

SETTING - UP PROCEEDURE



DEPENDING ON WHICH SIDE OF THE DOOR THE SIDE PANEL IS FITTED ON WILL DETERMINE WHICH CAP (E./F.) IS USED. THE EXTRA CAP CAN BE DISPOSED OF.